



LORD solutions for your market:

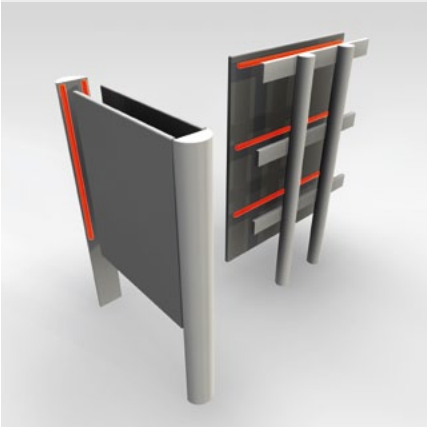
- ▶ Traffic signs
- ▶ Commercial signs
- ▶ Urban furnitures

Boundless design options and long lasting performance

In the traffic sign, commercial sign and urban furniture industries, traditional bonding techniques such as riveting or spot welding may lead to design or manufacturing issues. The choice of materials may be limited, their thickness and cost dictated by mechanical considerations rather than the desired aesthetics and final appearance. The desire to keep the bond line invisible can lead to complex designs, difficult to produce with a high throughput.

Find out in the pages below how LORD® Structural Adhesives can help you in achieving the design and performances you are looking for while offering you significant cost reduction opportunities.

POST AND PANELS



DESIGN

- ▶ Smooth sign face without visible mechanical fasteners or spot welding marks
- ▶ Endless design possibilities as most materials can be strongly bonded
- ▶ Choice of adhesive colors from clear to black for better aesthetics

PROCESS

- ▶ Robust process through limited surface preparation
- ▶ Fast process through short handling time adhesives
- ▶ Stiffener and panels can be bonded prior to powder coating operations

PERFORMANCE

- ▶ Better resistance to shock than riveted or spot welded solutions
- ▶ Excellent weathering
- ▶ High mechanical performances

LETTERS



DESIGN

- ▶ Invisible fixing. No surface damage
- ▶ Large choice of substrates
- ▶ Complex shapes
- ▶ Flush finish ensure durability and resistance to vandalism

PROCESS

- ▶ Robust process through limited surface preparation
- ▶ Fast process through short handling time adhesives

PERFORMANCE

- ▶ Structural strength necessary for small bonding area
- ▶ Excellent weathering
- ▶ High mechanical performances

TOTEMS



DESIGN

- ▶ Smooth sign face without visible mechanical fasteners or spot welding marks
- ▶ Open design possibilities as many materials can be strongly bonded. *(Please note that differential thermal expansion between used substrates must be carefully evaluated prior to specification.)*
- ▶ Choice of adhesive colors from clear to black for better aesthetics

PROCESS

- ▶ Robust process through limited surface preparation
- ▶ Fast process through short handling time adhesives
- ▶ Bond and seal in a single operation

PERFORMANCE

- ▶ Excellent static load performances
- ▶ Excellent weathering
- ▶ High mechanical performances



BOX AND SHOP SIGNS



DESIGN

- ▶ Flush aesthetic bond
- ▶ Endless design possibilities as most materials can be strongly bonded
- ▶ Choice of adhesive colors from clear to black for better appearance

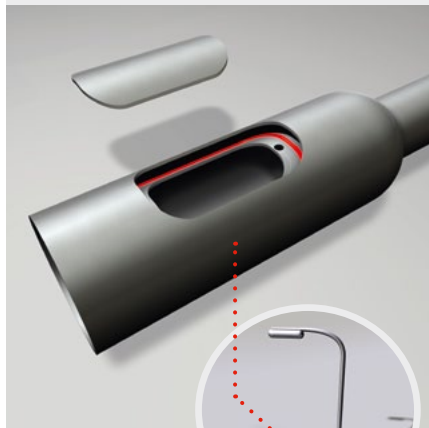
PROCESS

- ▶ Extremely simple assembly process
- ▶ Fast process through short handling time adhesives
- ▶ Bond and seal in a single operation

PERFORMANCE

- ▶ Better resistance to shock than riveted or spot welded solutions
- ▶ Excellent weathering
- ▶ No induced corrosion
- ▶ Maintain sign rigidity

URBAN FURNITURE



DESIGN

- ▶ Invisible bond
- ▶ Wide range of application
 - ▶ Rubber protective pads in mass transportation or park games
 - ▶ Structure reinforcements of lighting post
 - ▶ Tube bonding for shelters
 - ▶ Seats reinforcements

PROCESS

- ▶ Simple and fast process
- ▶ Complex or difficult to access part are easily assembled

PERFORMANCE

- ▶ Excellent weathering
- ▶ High mechanical performances
- ▶ Better resistance to fatigue and shocks

TRAFFIC SIGNS



DESIGN

- ▶ No deformation of light reflective face
- ▶ Powder coating possible for improved sign aesthetics

PROCESS

- ▶ Robust process through limited surface preparation
- ▶ Fast process through short handling time adhesives
- ▶ Process can be fully automated with application robots

PERFORMANCE

- ▶ Better resistance to shock than riveted or spot welded solutions
- ▶ Excellent weathering
- ▶ High mechanical performances passing requested safety standards

LORD® STRUCTURAL ADHESIVES SELECTION GRID

PRODUCT	CHARACTERISTICS	SPEED	SUBSTRATE	PERFORMANCE
ACRYLICS				
LORD 403E	Thixotropic Available in cream or black Available with thickness control	Very fast	Bare metals, HSE* Plastics Composites	Pass powder coat process High fatigue resistance High impact resistance High dead load resistance
LORD 406E	Thixotropic Available in cream or black Available with thickness control	Medium fast	Bare metals, HSE* Plastics Composites	Pass powder coat process High fatigue resistance High impact resistance High dead load resistance
URETHANE				
LORD 7550	Fluid, Cristal clear, Non yellowing	Medium fast	HSE* Plastics, Painted metals Composites	Good overall performances Aesthetic bond lines
LORD 7555	Thixotropic, Bright white, Non yellowing	Medium fast	HSE* Plastics, Painted metals Composites	Good overall performances Aesthetic bond lines
LORD 7556	Thixotropic, translucent, Non yellowing	Medium fast	HSE* Plastics, Painted metals Composites	Good overall performances Aesthetic bond lines
LORD 7545	Thixotropic, off white May yellow if exposed to UV	Available with different open times	HSE* Plastics, Painted metals Composites	Large parts bonding Accommodate mismatch High performances
EPOXY				
LORD 305	Self-leveling Blue	Long open time	Rubber, Wood Concrete / Stone	Versatile, Cavity filling Large surface bonding: Pads
LORD 310	Paste Grey	Long open time	Rubber, Wood Concrete / Stone	Versatile High dead load resistance
LORD 320	Paste Black	Long open time	Rubber, Wood Concrete / Stone	Versatile, Toughened Excellent for rubber
LORD 7701	Clear to cloudy Liquid		Primer for various vulkanized rubbers, TPE's, TPO's and EPDM	Enhance performance on rubber bonding
LORD AP134	Clear yellow to amber liquid		primer for glass, ceramic tiles, concrete and some metals like aluminium	Enhance performance and durability for metal and glass bonding

* HSE: High Surface Energy plastic - like PVC, PET, PS. For LSE = Low Surface Energy plastics use pre-treatment for activation

Values stated herein represent typical values as not all tests are run on each lot of material produced. For formalized product specifications for specific product end uses, contact the Customer Support Center. Information provided herein is based upon tests believed to be reliable. In as much as LORD Corporation has no control over the manner in which others may use this information, it does not guarantee the results to be obtained. In addition, LORD Corporation does not guarantee the performance of the product or the results obtained from the use of the product or this information where the product has been repackaged by any third party, including but not limited to any product end-user. Nor does the company make any express or implied warranty of merchantability or fitness for a particular purpose concerning the effects or results of such use.

LORD and "Ask Us How" are trademarks of LORD Corporation or one of its subsidiaries.

LORD Europe

EUROPEAN HEADQUARTERS

LORD Suisse Sarl
CH-1218 Le Grand Saconnex
Geneva
Switzerland
+41 22 761 50 60
europecsc@lord.com

EUROPE CUSTOMER ENGAGEMENT CENTERS

LORD Suisse Sarl
CH-1218 Le Grand Saconnex
Geneva
Switzerland
+41 22 761 50 74
europecsc@lord.com

LORD Germany GmbH
Itterpark 8-10
40724 Hilden
Germany
+49 2103 252 310
info.europe@lord.com

LOCAL REPRESENTATIVES

Czech Republic	+48 618 22 58 78	Middle East	+971 561 136 330
France	+33 6 24 09 32 25	Poland	+48 618 22 58 78
Germany	+49 162 262 77 81	Russia	+7 495 99 550 22
Israel	+972 86 90 08 01	Spain	+39 342 675 18 55
Italy	+39 342 675 18 55	Scandinavia	+44 161 868 17 93
Benelux	+44 161 868 17 93	Turkey	+902 16 30 238 10
Portugal	+39 342 675 18 55	UK/Ireland	+44 161 868 17 93

LORD

Ask Us How™

www.lord.com/emea